

TechnoFix UK

Driver installation instructions for USB cables SiLabs CP2102 chipset

This document contains USB cable driver installation instructions for CP2102 chipset cables only. For other chipsets e.g. FTDI and for instructions for use, please refer to <https://technofix.uk/help>

These instructions have been written using Windows 11 as an example. Other versions of Windows may vary slightly, but the basic procedure will be similar. Driver installation is not usually needed for Linux. Please refer to the last page of this document.

Please download and extract the driver before connecting cable!

Start by downloading the latest driver from the SiLabs website. Go to:

<https://www.silabs.com/developers/usb-to-uart-bridge-vcp-drivers>

and click on the *Downloads* tab:



Now click on the *CP210x Universal Windows Driver* file link:

Download and Install VCP Drivers

Downloads for Windows, Macintosh, Linux and Android below.

*Note: The Linux 3.x.x and 4.x.x version of the driver is maintained in the current Linux 3.x.x and 4.x.x tree at www.kernel.org.

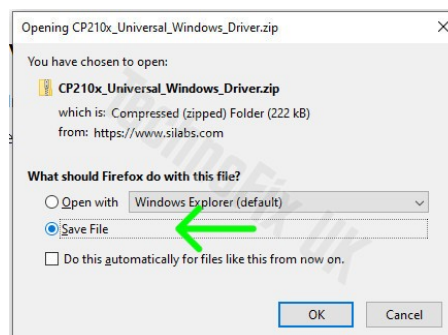
Software Downloads

Software (11)

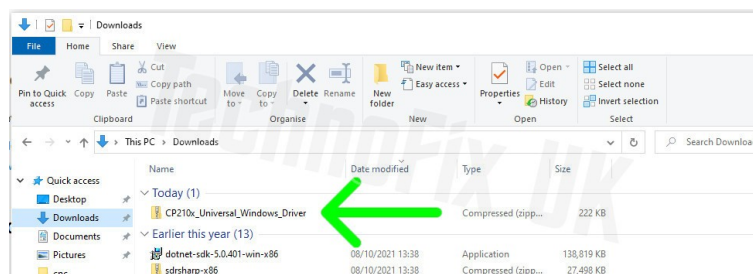
Software · 11

Software	Version
CP210x Universal Windows Driver	v11.0.0 11/17/2021
CP210x VCP Mac OSX Driver	v6.0.2 10/26/2021
CP210x VCP Windows	v6.7 9/3/2020
CP210x Windows Drivers	v6.7.6 9/3/2020
CP210x Windows Drivers with Serial Enumerator	v6.7.6 9/3/2020

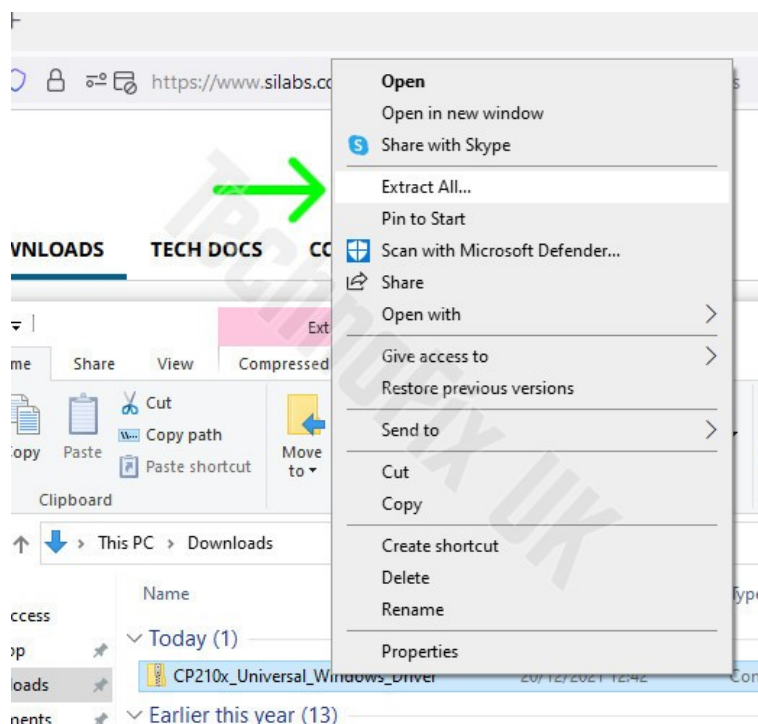
Select *Save File* and click *OK*.



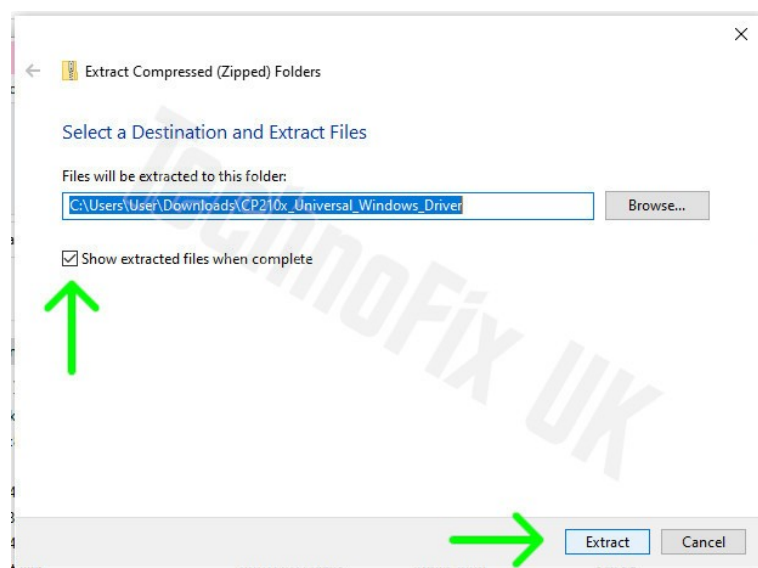
The drivers are now in a zip file on your PC, usually in your *Downloads* folder:



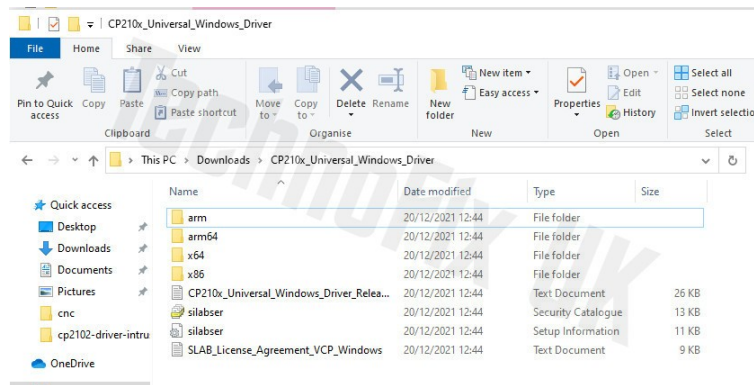
Right-click on this file and then select 'Extract All':



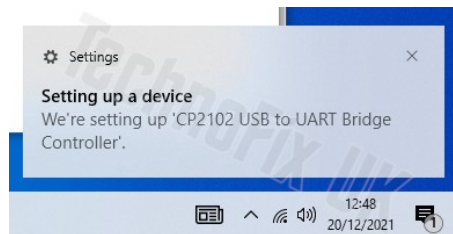
Tick the box marked *Show extracted files when complete* and click *Extract*:



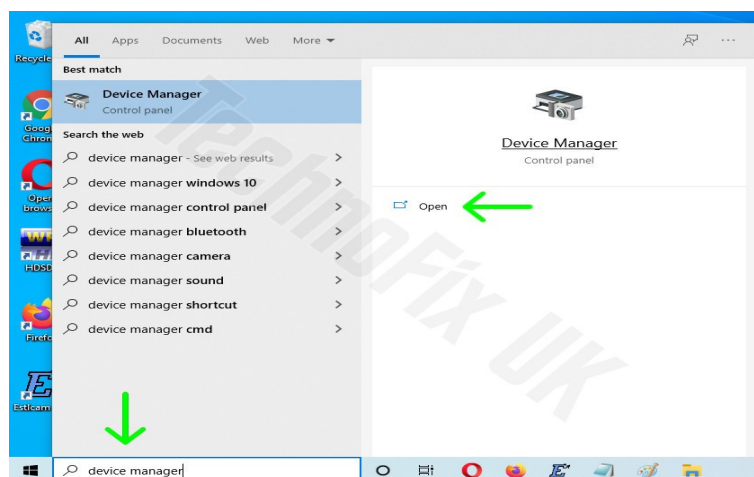
When extraction is complete, a window will open showing the extracted driver files. It should look similar to this:



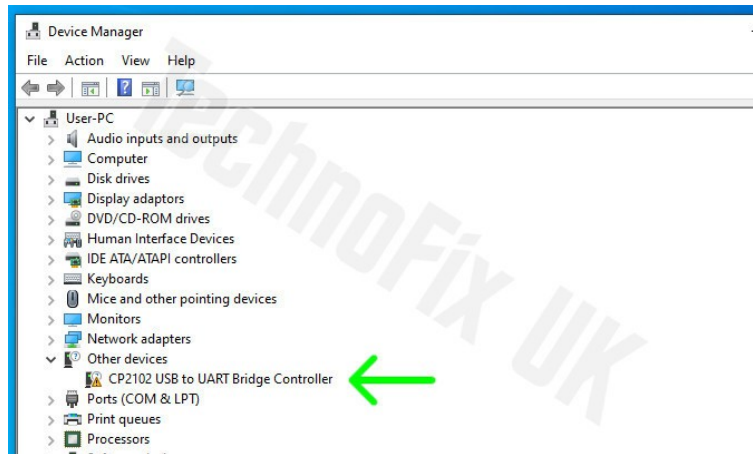
You can now plug the cable into a USB port on your PC. You should see a message like this one:



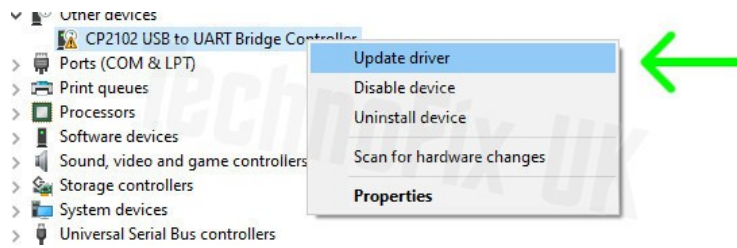
You need to make sure Windows is using the up-to-date driver you have downloaded and extracted. Type *Device Manager* into the Windows search bar and click *Open*:



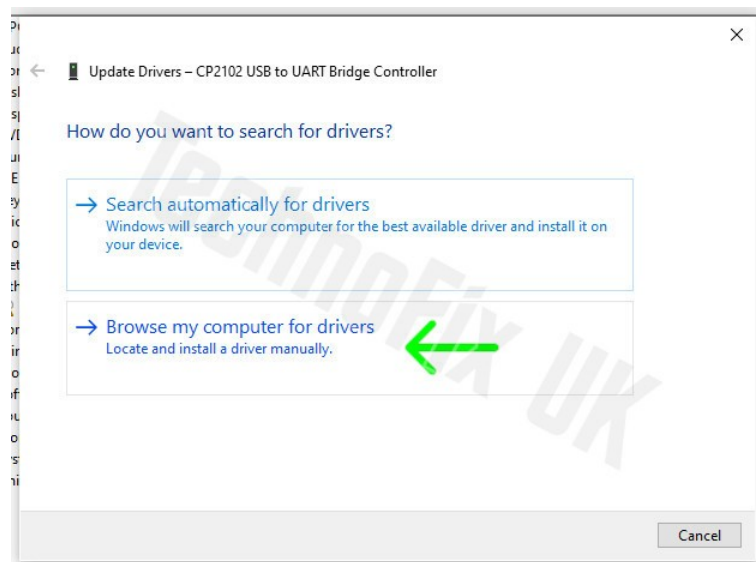
Look for the CP2102 device. You may need to expand the *Ports (COM & LPT)* section by clicking on the > on its left:



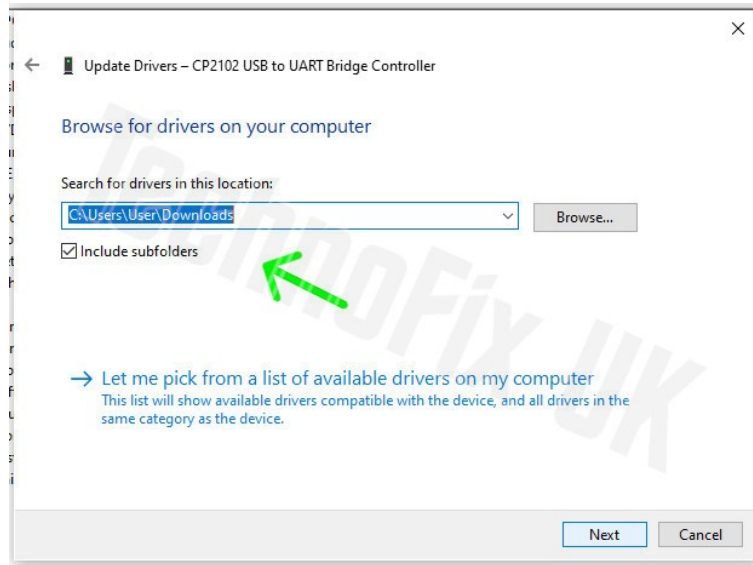
Right-click on the CP2102 device and select *Update driver*:



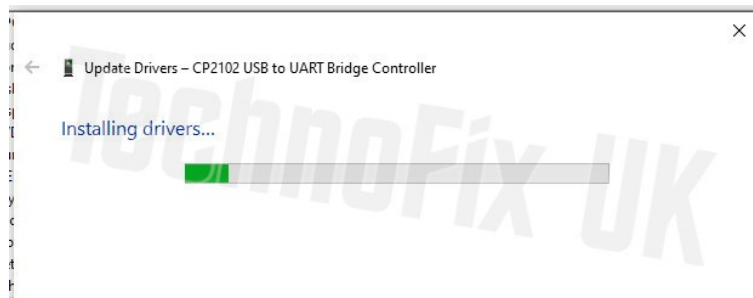
Then select *Browse my computer for drivers*:



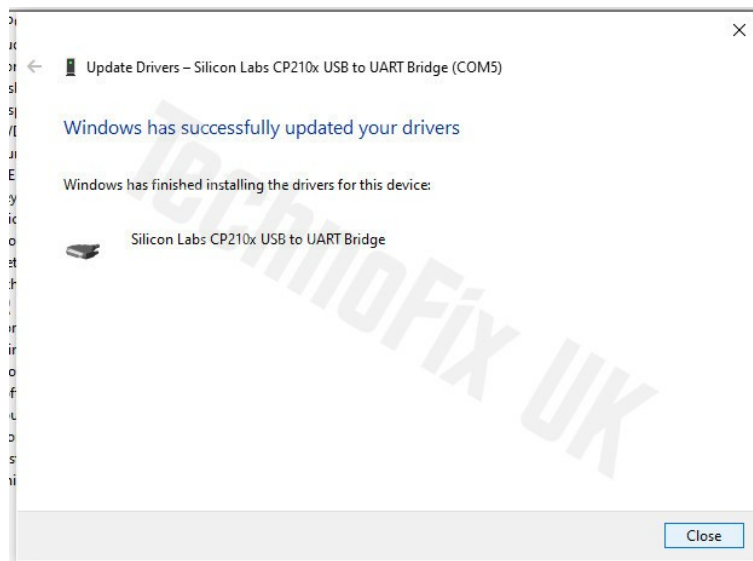
Now select the location of the driver you extracted earlier (usually *Downloads*) and tick the box *Include subfolders*. Then click *Next*:



Windows will install the driver:



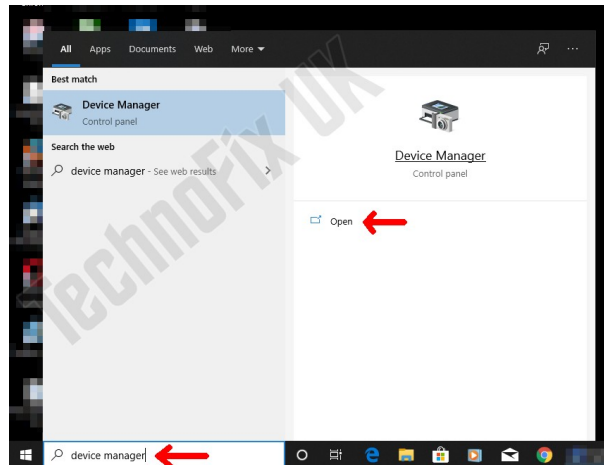
Success!



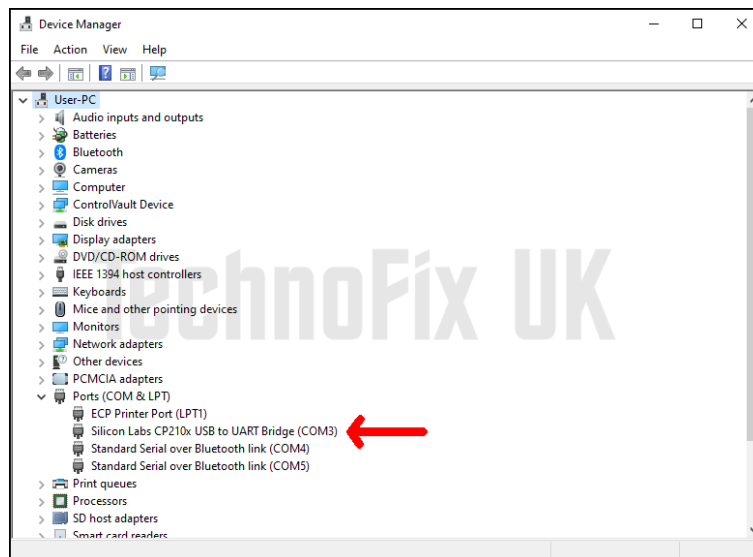
Locating the COM port

Some software can auto-detect your cable, but if not you may need to find out which COM port Windows has assigned to it. You will need to look in *Device Manager*.

In the search bar to the right of the Windows *Start* button, type *Device Manager*, then click *Open*:



Expand the *Ports (COM & LPT)* section by clicking on the > on its left:



Look for *Silicon Labs CP210x USB to UART Bridge*. In the example above, the cable has been assigned *COM3*. If you plug the cable into a different USB port on your PC, Windows may assign a different COM port number and you will need to look in *Device Manager* again.

Linux

Most modern Linux systems will already have the CP2102 kernel module available. Simply plug the cable into USB port on your PC. The first USB serial port will normally be assigned /dev/ttyUSB0, the second /dev/ttyUSB1 and so on.

If you are having problems or are not sure which device name has been assigned to your cable, open a terminal and type

```
tail -f /var/log/syslog
```

then plug the cable in. In this example, the cable has been assigned /dev/ttyUSB0.

```
May 24 10:17:24 ian-cute kernel: [ 6407.248086] usb 5-1: reset full speed USB device number 2 using uhci_hcd
May 24 10:17:24 ian-cute kernel: [ 6407.400373] usb 5-1: cp210x converter now attached to ttyUSB0
May 24 10:17:24 ian-cute kernel: [ 6407.400483] usbcore: registered new interface driver cp210x
May 24 10:17:24 ian-cute kernel: [ 6407.400491] cp210x: v0.09:Silicon Labs CP210x RS232 serial adaptor driver
```

Mac, WinCE and other operating systems

Drivers are available for Mac and other operating systems. We have no facilities for installing these drivers, so apologise for the lack of instructions. Please visit the chipset manufacturer's website for further guidance. If you use your cable with another OS and would like to tell us about your experience and even contribute some instructions to help other users, we would be very pleased to hear from you.